

REGISTRY USE ONLY

ADDRESS OF PROPERTY  
 L.C. LOT 2A, REDMOND STREET  
 BURLINGTON, MASSACHUSETTS  
 OWNER OF RECORD  
 SOMERSET REALTY TRUST  
 ROBERT W. MURRAY, TRUSTEE  
 27 CAMBRIDGE STREET  
 BURLINGTON, MASSACHUSETTS  
 DEED REFERENCE  
 DEED BOOK 72575 PAGE 571  
 LAND COURT DOCUMENT 01668573  
 DEED BOOK 1451, PAGE 33  
 CERT#: 256348  
 PLAN REFERENCE  
 L.C. PLAN 41177-A  
 PLAN BOOK 212 PLAN 48 (MAY 9, 2013)  
 PLAN 61 OF 2020  
 ASSESSORS MAP REFERENCE  
 PARCEL 29-75-1  
 ZONING CLASSIFICATION  
 RO-ONE FAMILY DWELLING

ADDRESS OF PROPERTY  
 LOTS 155-170, REDMOND STREET  
 BURLINGTON, MASSACHUSETTS  
 OWNER OF RECORD  
 RODERICK MacDONALD, TRUSTEE  
 SHELMAC REALTY TRUST  
 P. O. BOX 276  
 MOULTONBORO, NEW HAMPSHIRE  
 DEED REFERENCE  
 DEED BOOK 12517, PAGE 551  
 PLAN REFERENCE  
 PLAN BOOK 212 PLAN 48 (MAY 9, 2013)  
 ASSESSORS MAP REFERENCE  
 PARCEL 29-84-0  
 ZONING CLASSIFICATION  
 RO-ONE FAMILY DWELLING

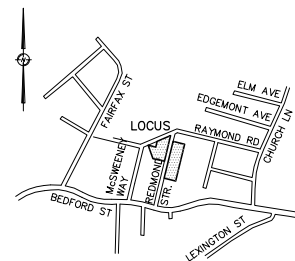
NOTES:

- UTILITY LOCATIONS SHOWN ARE BASED UPON A FIELD SURVEY, CONTRACTORS' NOTES, AND RECORD UTILITY PLANS. THE LOCATIONS OF UNDERGROUND PIPES AND CONDUITS HAVE BEEN DETERMINED FROM THE AFOREMENTIONED ITEMS AND ARE APPROXIMATE ONLY. BEFORE PLANNING FUTURE CONNECTIONS, CONTACT "DIGSAFE" AT 1-800-322-4844. IN ADDITION, THE CONTRACTOR SHALL COORDINATE CONSTRUCTION ACTIVITIES NEAR UTILITY LOCATIONS WITH THE RESPECTIVE UTILITY REPRESENTATIVE.
- VERTICAL DATUM=N.A.V.D. 1988

WETLAND NOTE:

WETLANDS DELINEATED BY MARY TRUDEAU IN APRIL & MAY 2013 AND APRIL 2018. WETLAND FLAGS LOCATED IN THE FIELD BY COMMONWEALTH ENGINEERING INC. IN APRIL & MAY 2013 AND APRIL 2018.  
 LOCATION OF REGULATORY STREAM COMPILED FROM "REGULATORY STREAMS OF BURLINGTON" MAP ISSUED BY THE BURLINGTON CONSERVATION COMMISSION AND FROM TOWN TOPOGRAPHIC MAPPING.

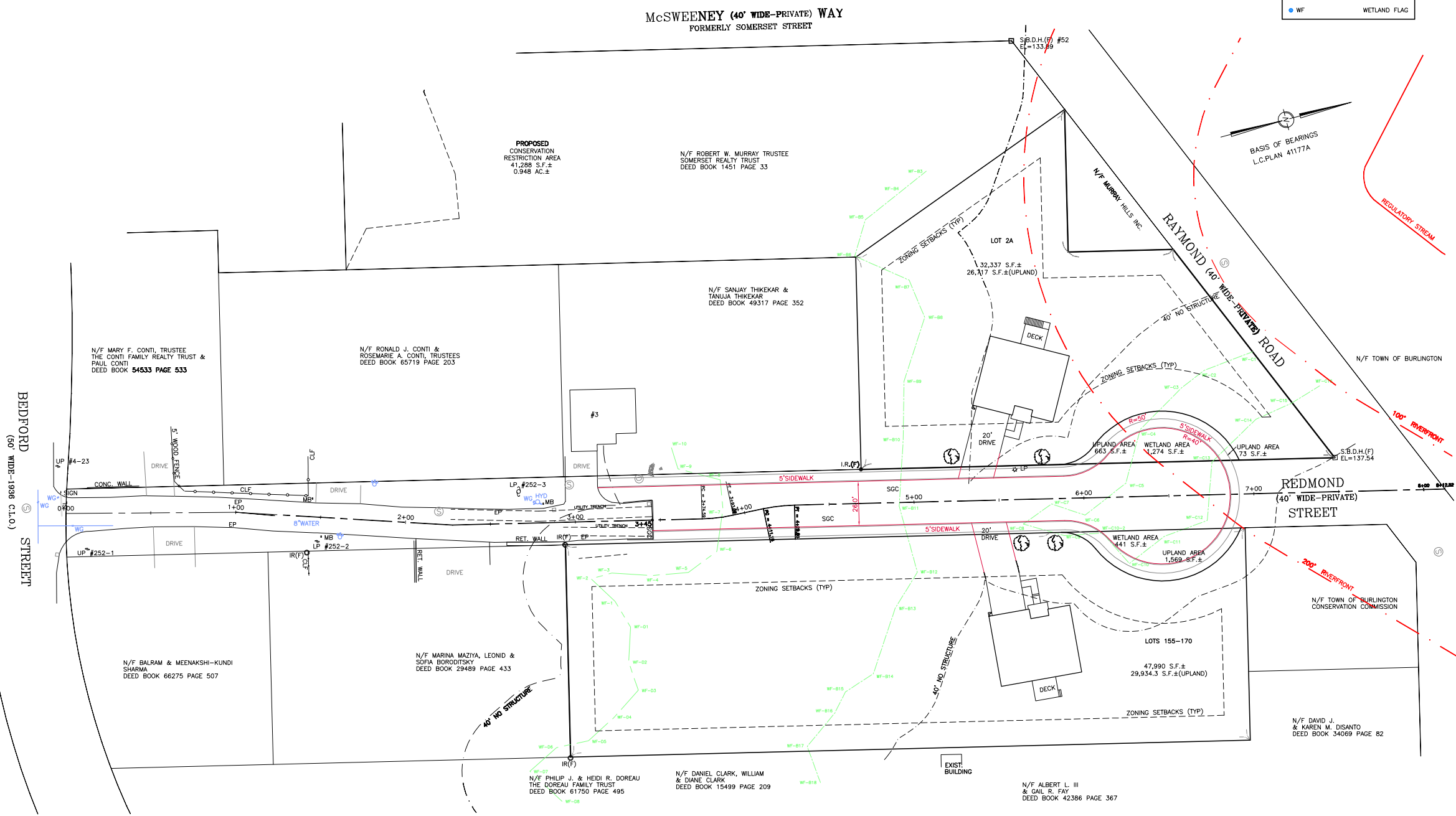
LEGEND	
AC.	ACRES
CCB	CAPE COD BERM
□ CB	CATCH BASIN
C.L.O.	COUNTY LAYOUT
⊙ DMH	DRAIN MANHOLE
⊕ GG	GAS GATE
⊖ GW	GUY WIRE
⊕ HYD	FIRE HYDRANT
I	INVERT ELEVATION
L.C.	LAND COURT
N/F	NOW OR FORMERLY
R	RISE ELEVATION
⊙ SMH	SEWER MANHOLE
SF.	SQUARE FEET
□ SB/FND	STONE BOUND FOUND
□ SBDH/FND	STONE BOUND WITH DRILL HOLE FOUND
⊙	TELECOM MANHOLE
⊕ UP	UTILITY POLE
⊕ WG	WATER GATE
■	WETLAND AREA
■ WF	WETLAND FLAG



LOCUS MAP NOT TO SCALE

**COMMONWEALTH ENGINEERING INC.**  
 CIVIL ENGINEERS & LAND SURVEYORS  
 27 CAMBRIDGE STREET  
 SUITE 106  
 BURLINGTON, MA 01803  
 TEL (781) 229-0411  
 FAX (781) 229-0520  
 WWW.COMMONENG.COM

**McSWEENEY (40' WIDE-PRIVATE) WAY**  
 FORMERLY SOMERSET STREET



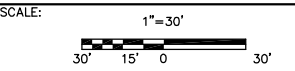
**DEFINITIVE SUBDIVISION**  
**4 & 5 REDMOND STREET**  
**BURLINGTON**  
**MASSACHUSETTS**

MARCH 1, 2021

**PROOF PLAN**

APPLICANT:  
 SOMERSET REALTY TRUST  
 ROBERT W. MURRAY, TRUSTEE  
 27 CAMBRIDGE STREET  
 BURLINGTON, MASSACHUSETTS

REVISIONS:		
NO.	DATE	DESCRIPTION



FIELD: DDO/JPH/ERN	CALCULATED: DDO
DRAWN: ERN/DNR	CHECKED: DDO/DNR
FILE PATH (H:/PROJ):... \212033.00\DWG\... \REDMOND_STREET\CEI-DEFIN.DWG	
TAB: PROOF-PLAN	SHEET: <b>PROOF</b>
JOB NO.: 218001.00	